

EMPLOYEE BENEFITS LIST

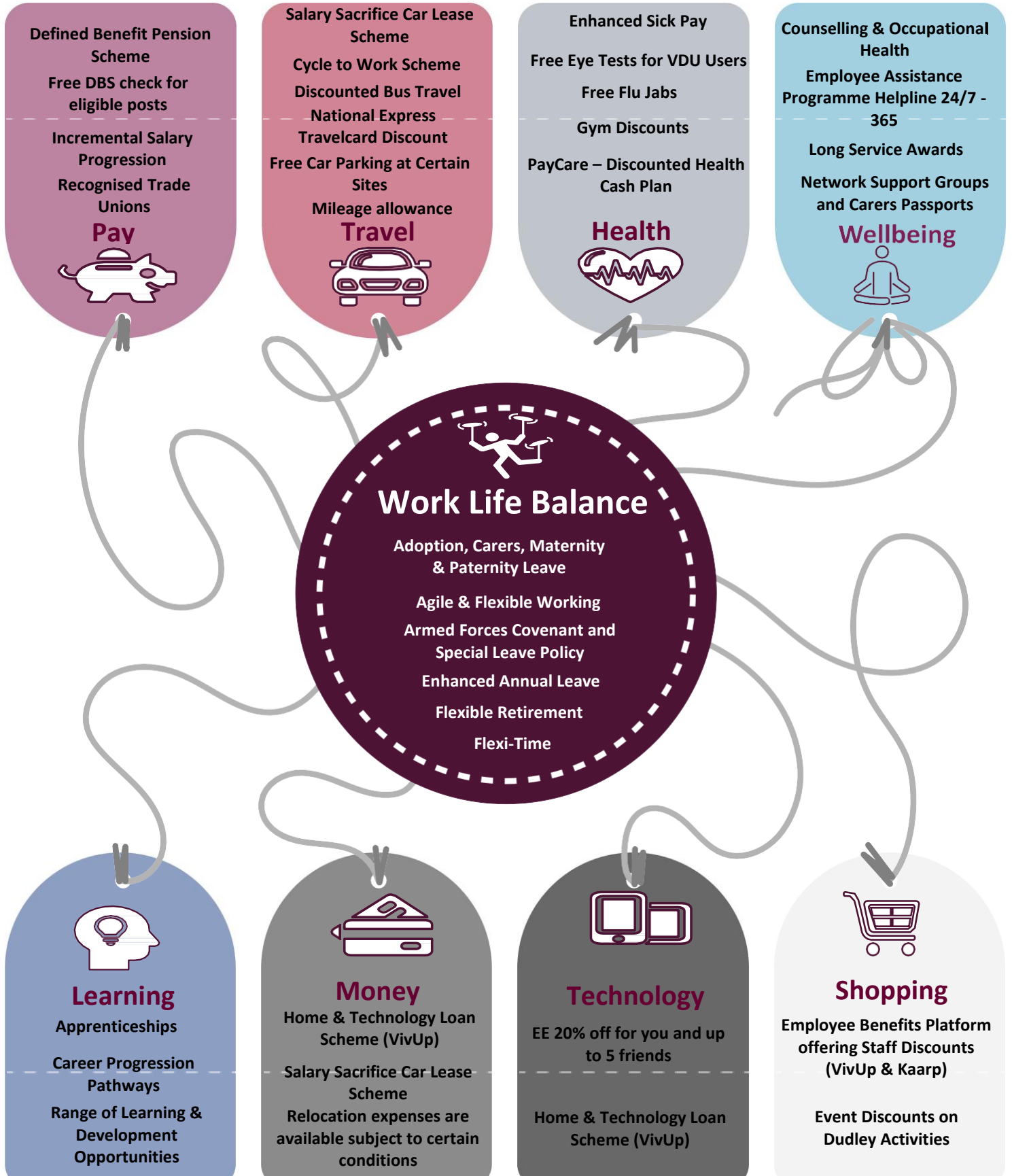


Figure 1E

fleet
SOLUTIONS
proudly part of the **NHS**

Dudley
Metropolitan Borough Council

**HASSLE-FREE WAY
TO LEASE YOUR DREAM CAR**



Lease via our salary sacrifice scheme and access special offers exclusive for NHS and public sector colleagues!



The monthly cost includes:

- Insurance
- Road Tax
- Routine Servicing
- Breakdown Cover
- Tyre Replacement
- Windscreen Cover

#ColleaguesFIRST

**Image for illustrative purposes only.*

www.nhsfleetsolutions.co.uk



Make your must-haves more manageable

Want to access the items you want and need in a more manageable way? Visit Home and Electronics to spread the cost on tech and appliances from the leading brands - straight from your salary



Items fulfilled by



Explore [Dudley.vivup.co.uk](https://dudley.vivup.co.uk)



Whilst stocks last. Goods will be ordered from the supplier when your order has been authorized by your employer. Delivery should be within 10 working days from ordering with the supplier, subject to availability and excluding selected items which may have longer lead times. These delivery dates are a guide and not guaranteed. Please be aware that factors beyond our control may delay your order if the firm you have ordered from a longer lead time, you will be contacted by the Vivup customer service team with further information. Home & Electronics is provided via a salary sacrifice arrangement. Terms & Conditions apply.



Support your mental health and wellbeing with our Employee Assistance Programme (EAP)

Whether you're facing problems at work or at home, you can access impartial, confidential advice from qualified counsellors for a range of different issues



A telephone helpline available 24/7, 365 days a year

Simply call

03303 800658*

(or 0800 023 9324 free from any standard UK landline or mobile)



Resources include:



Telephone helpline



Debt and financial advice



Downloadable self-help workbooks



Podcasts, blogs and more



Visit [Dudley.vivup.co.uk](https://dudley.vivup.co.uk) to get started



* Calls charged at local rates